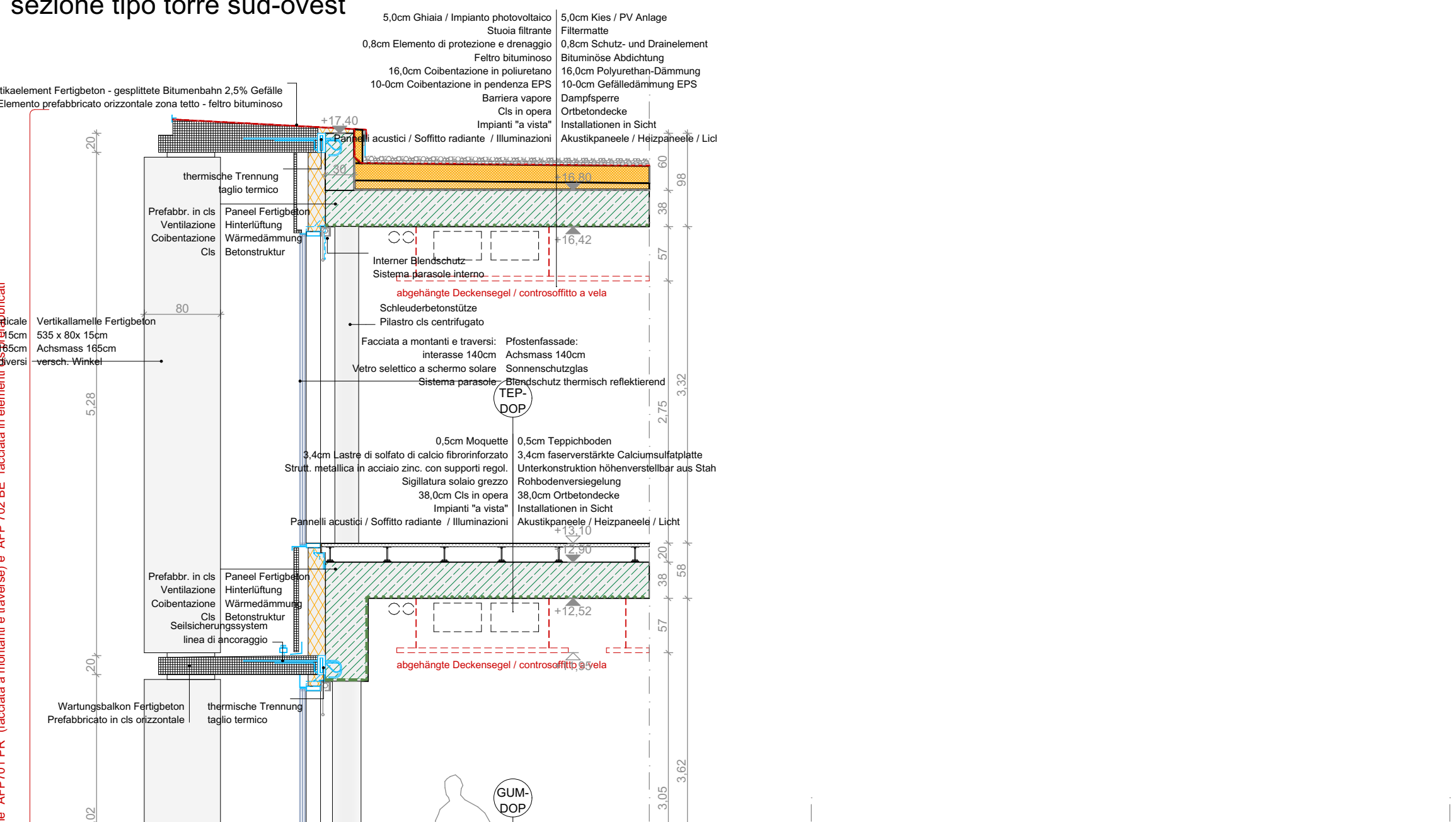
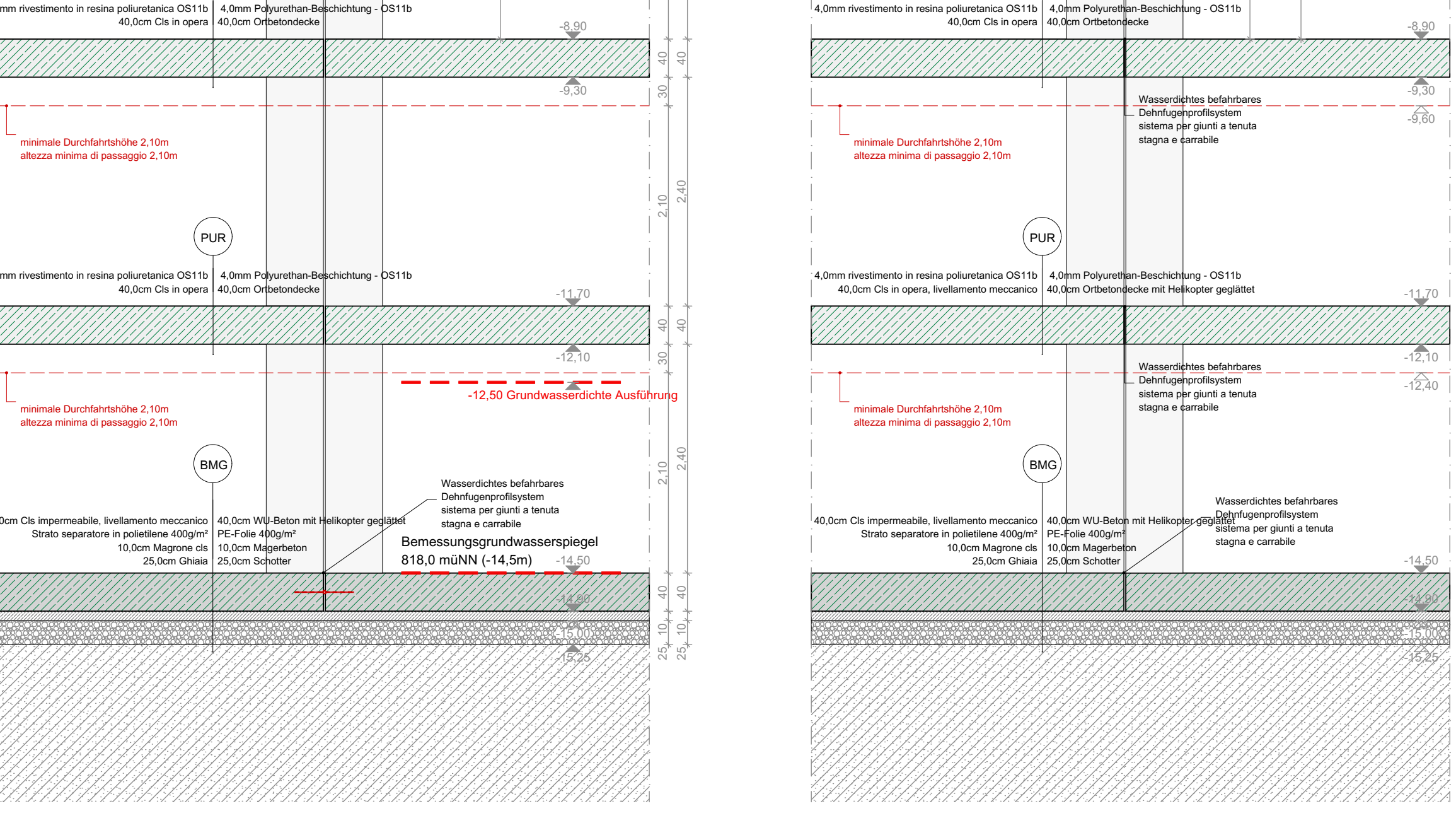
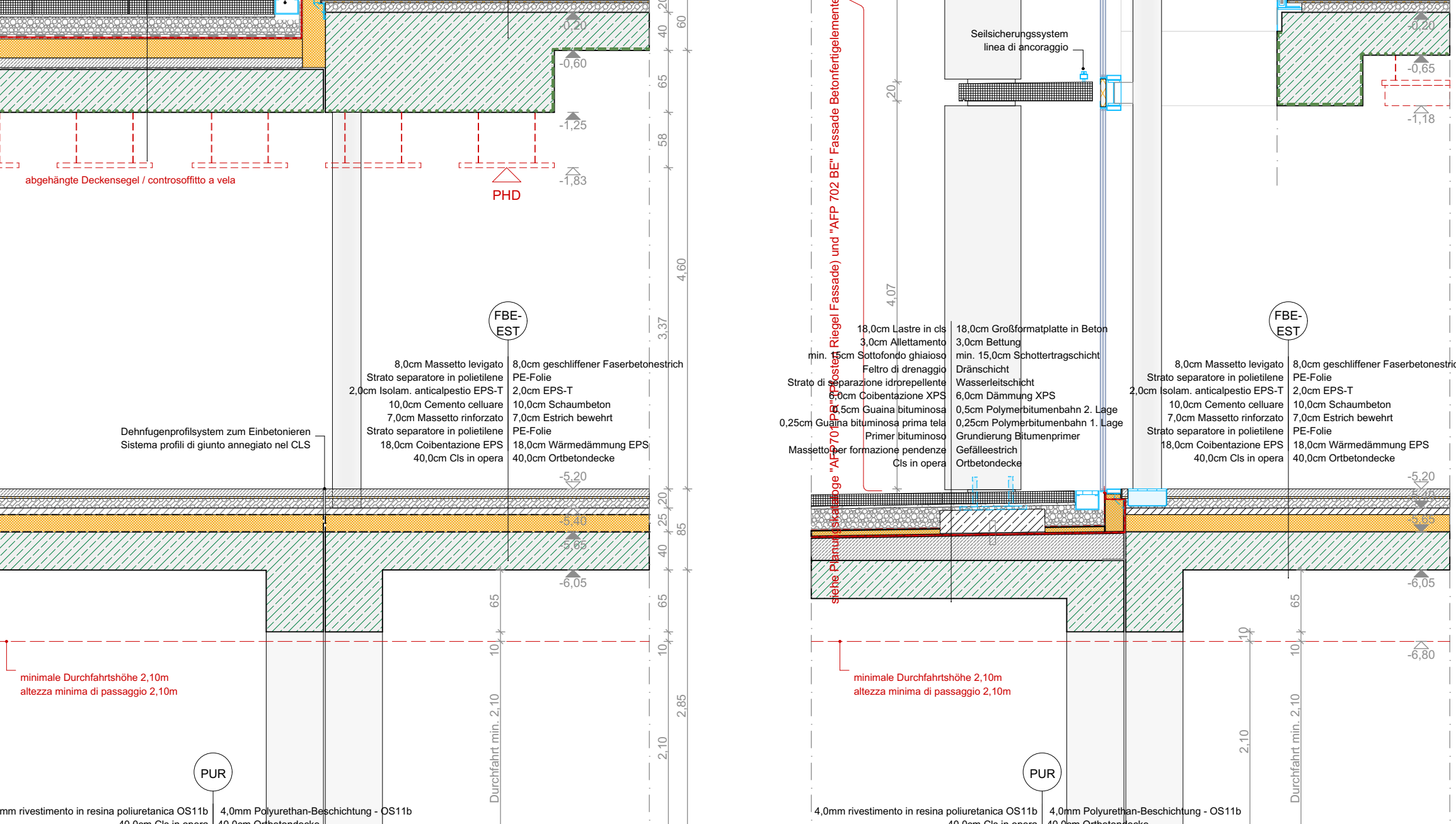
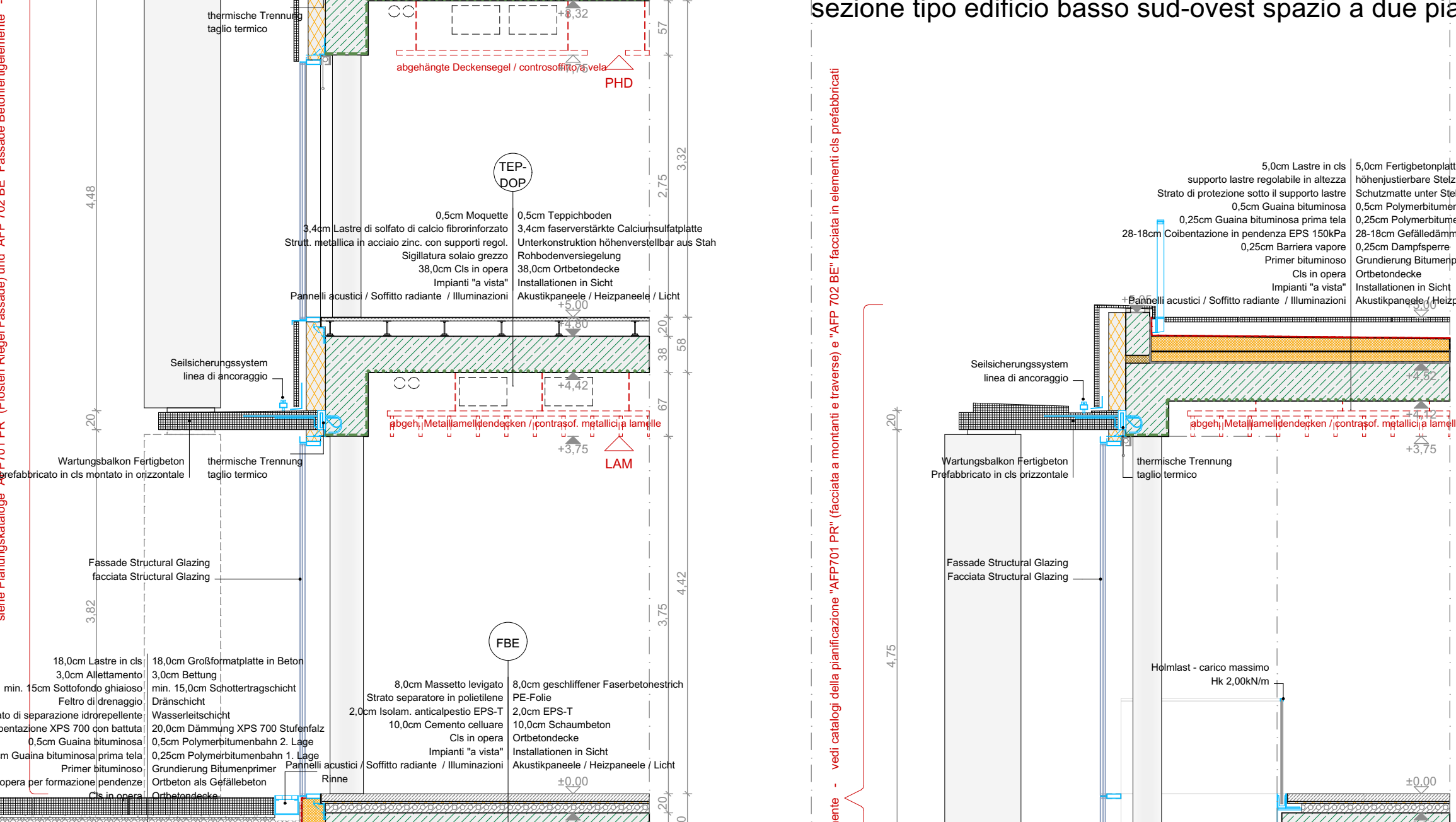


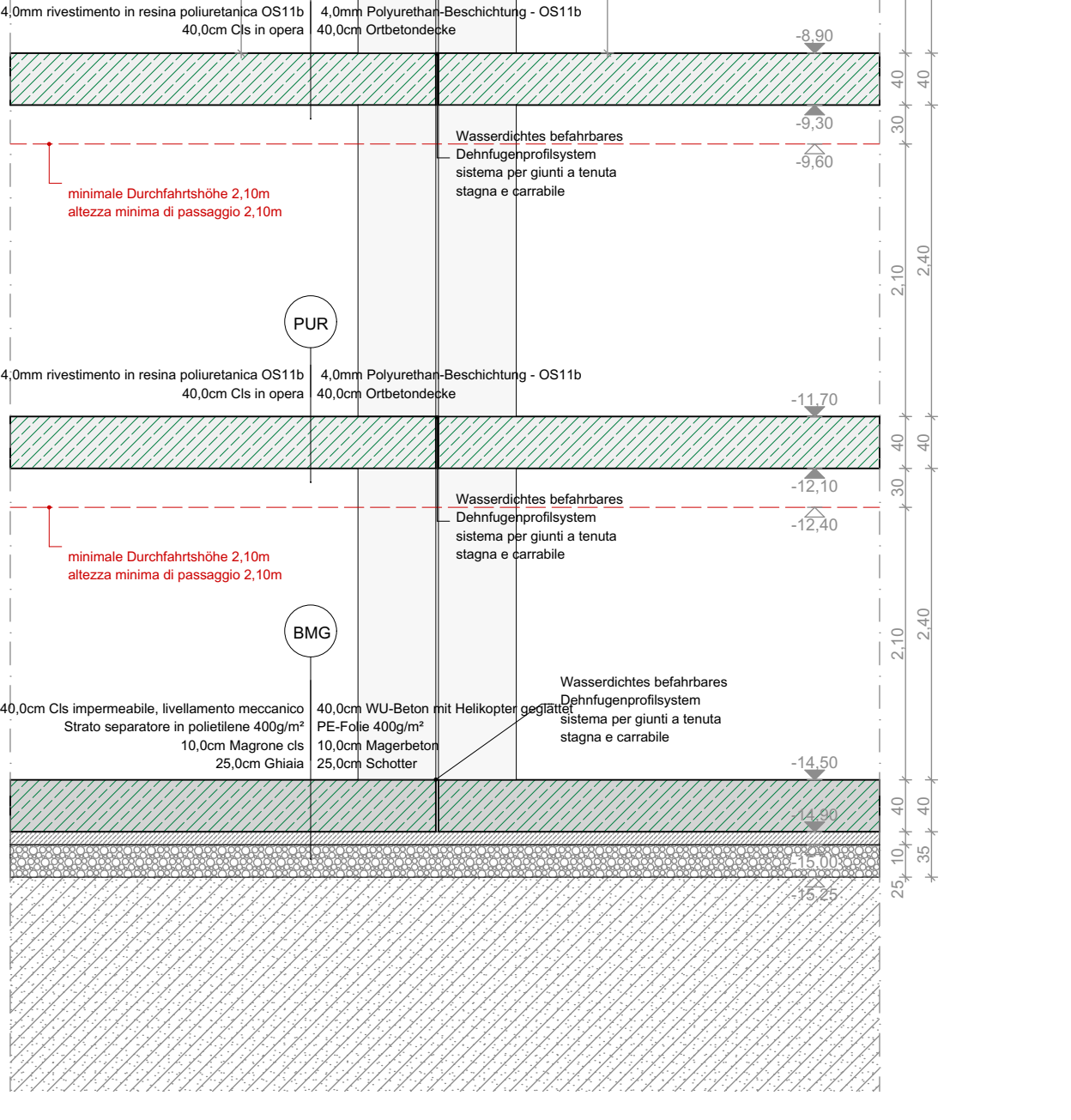
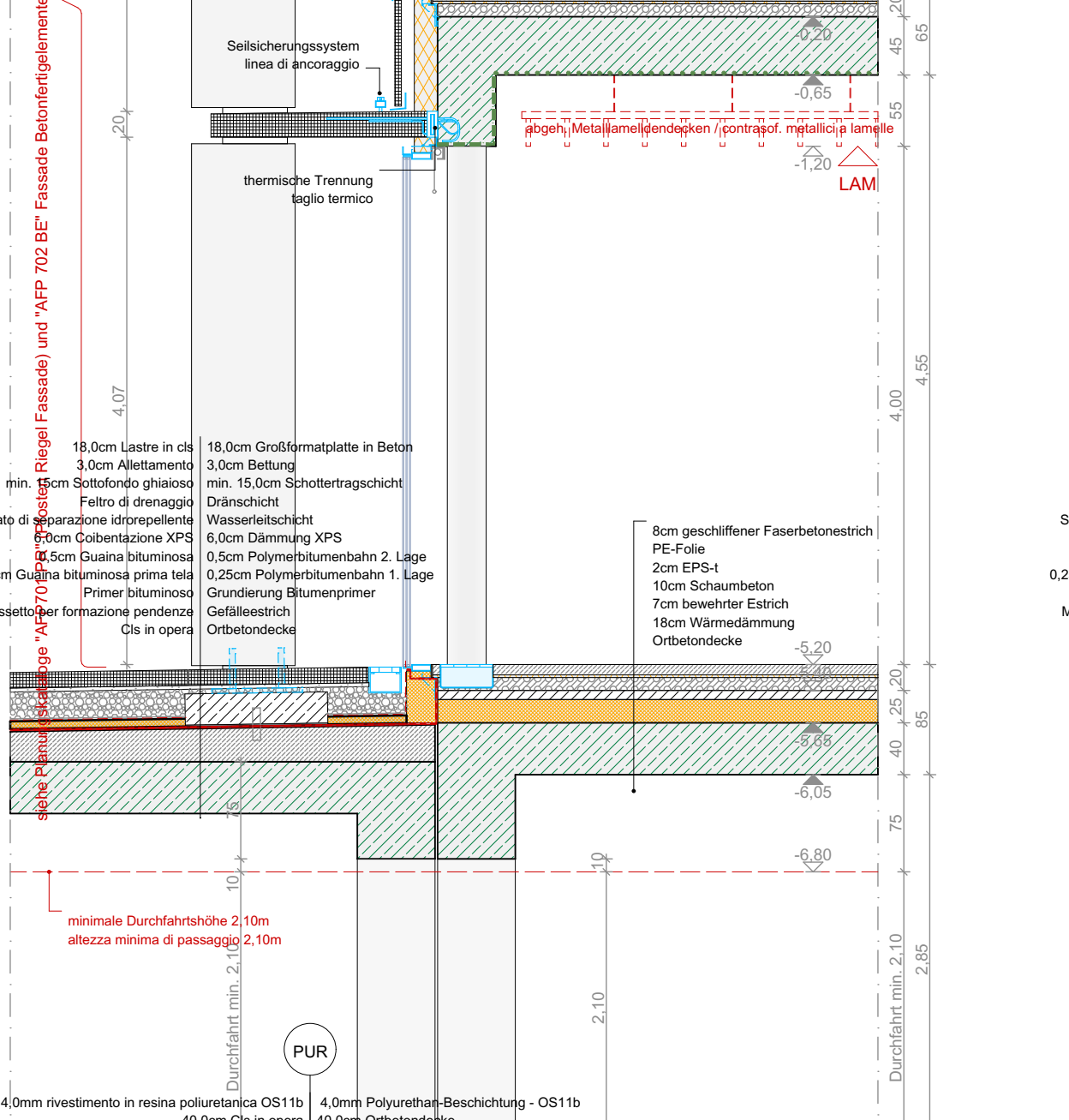
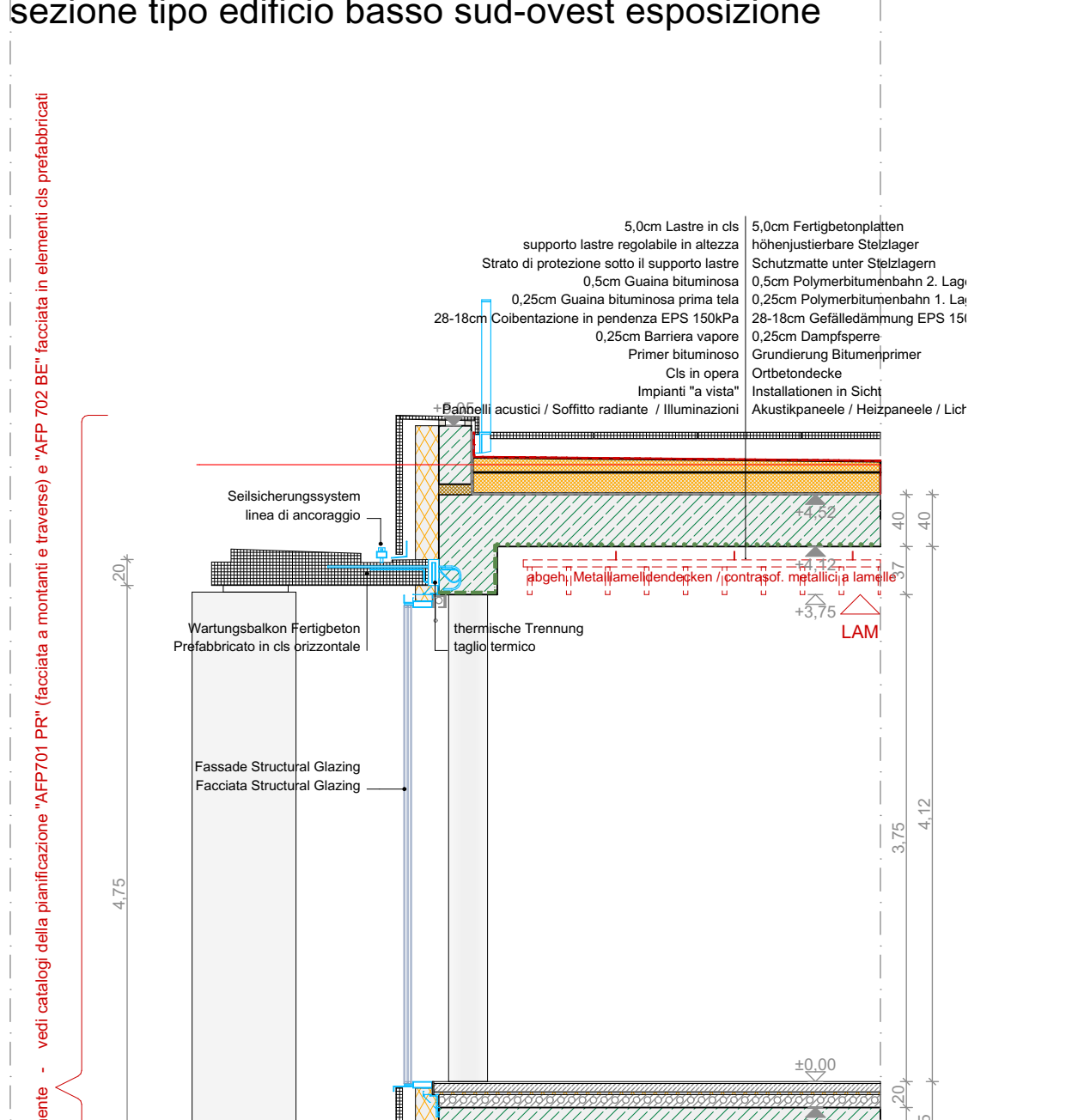
Systemschnitt Turm Süd-Wes  
sezione tipo torre sud-ovest



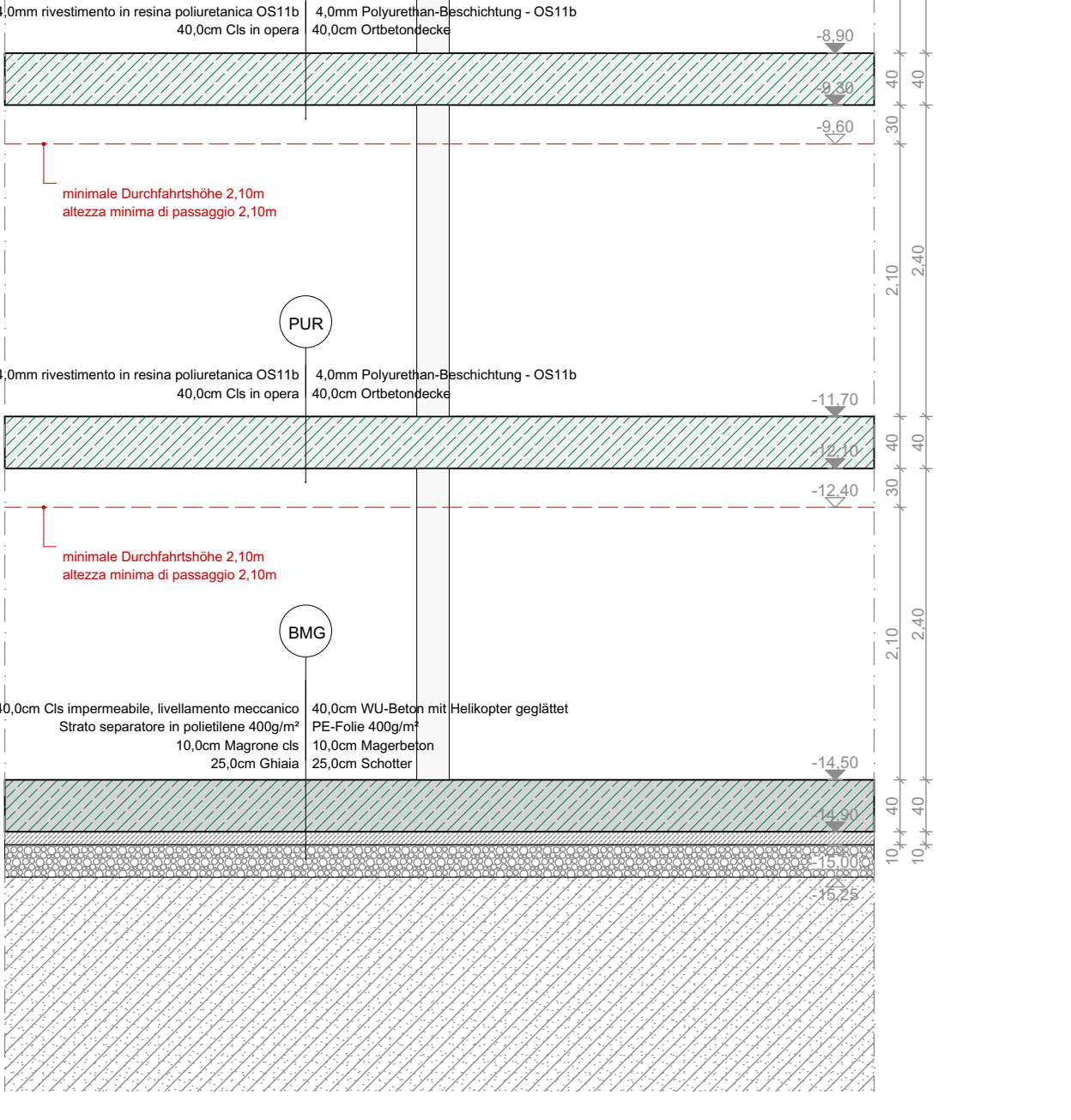
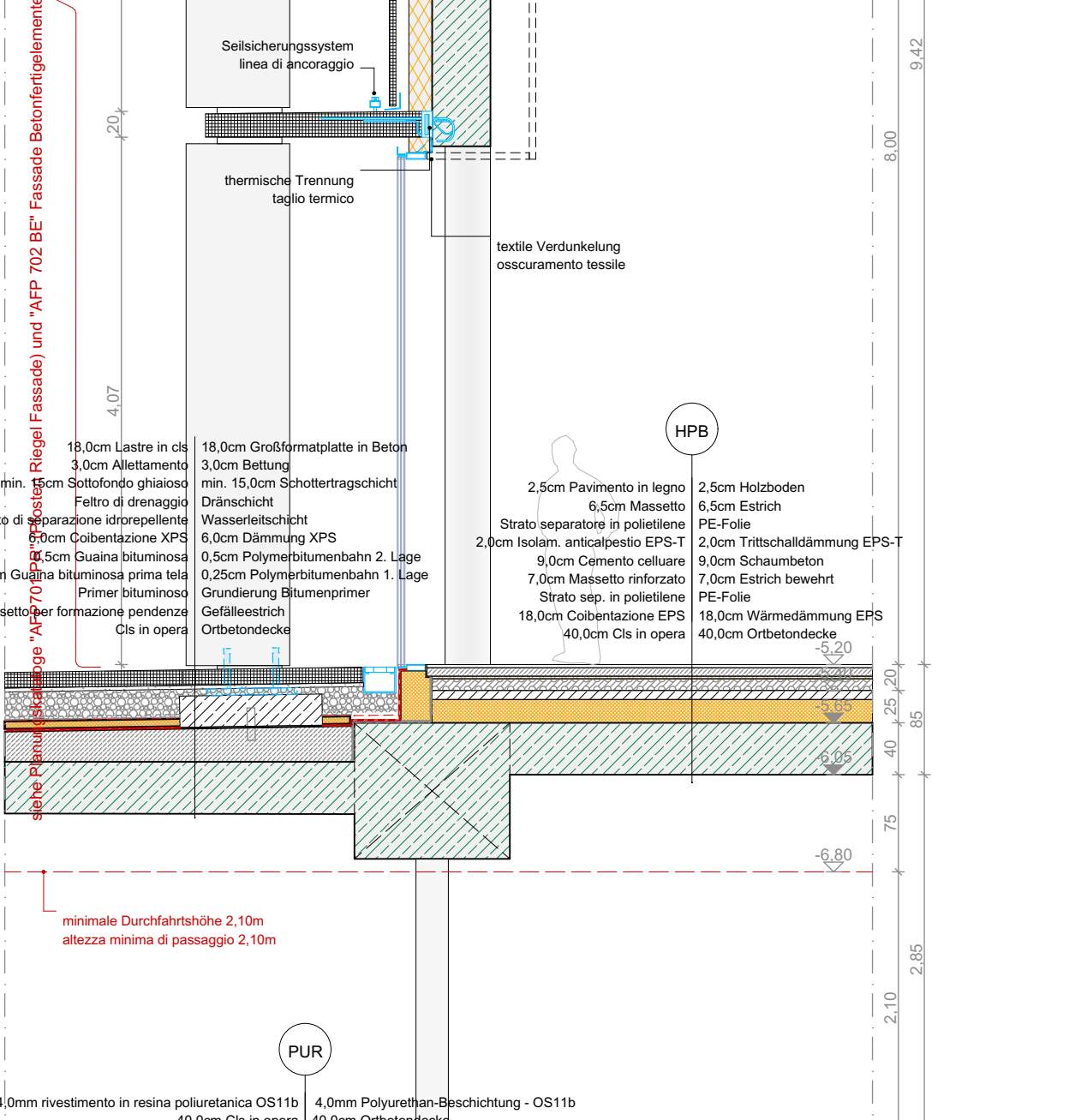
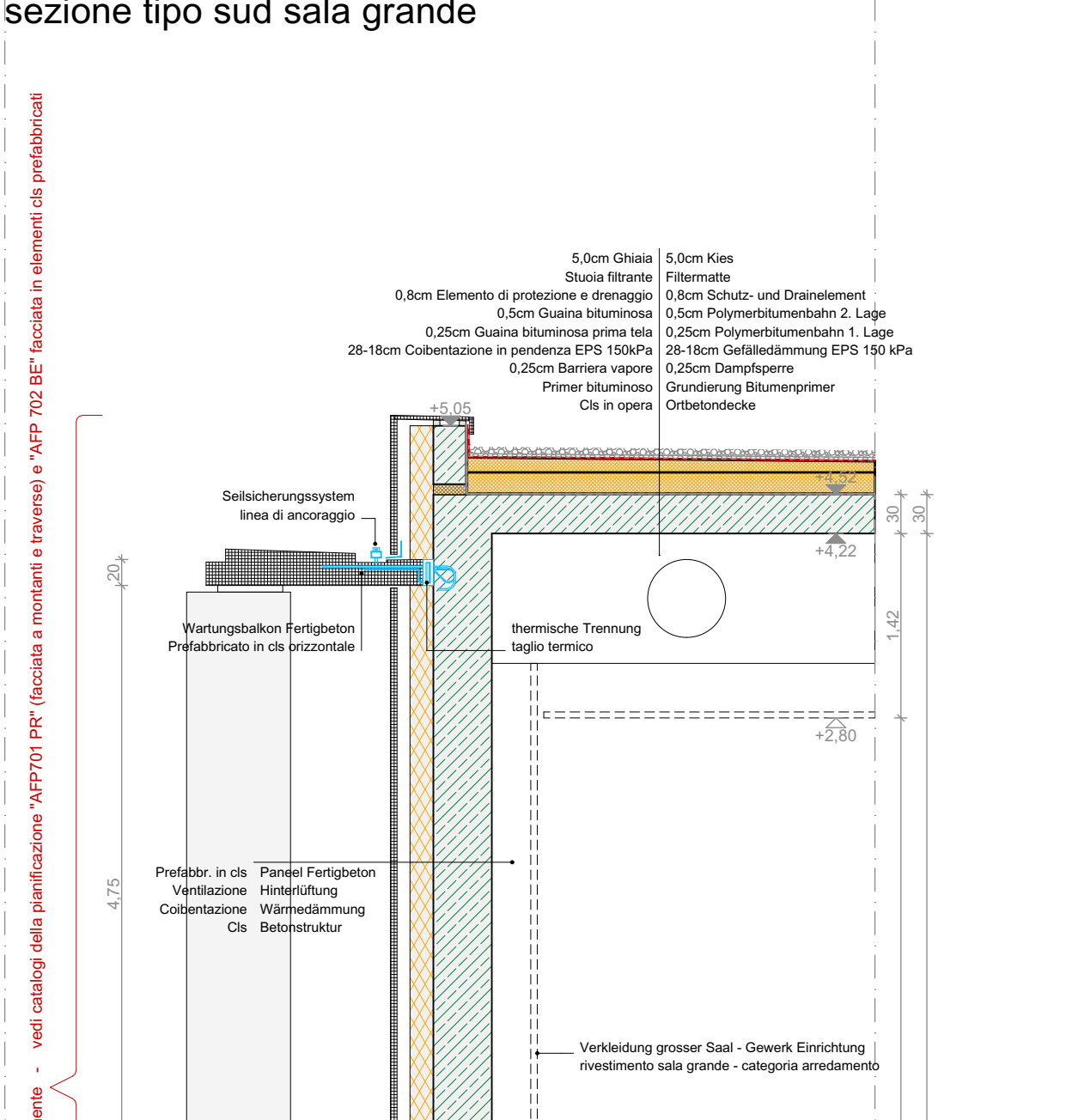
Systemschnitt Flachbau Süd-West Luftraum  
sezione tipo edificio basso sud-ovest spazio a due piani



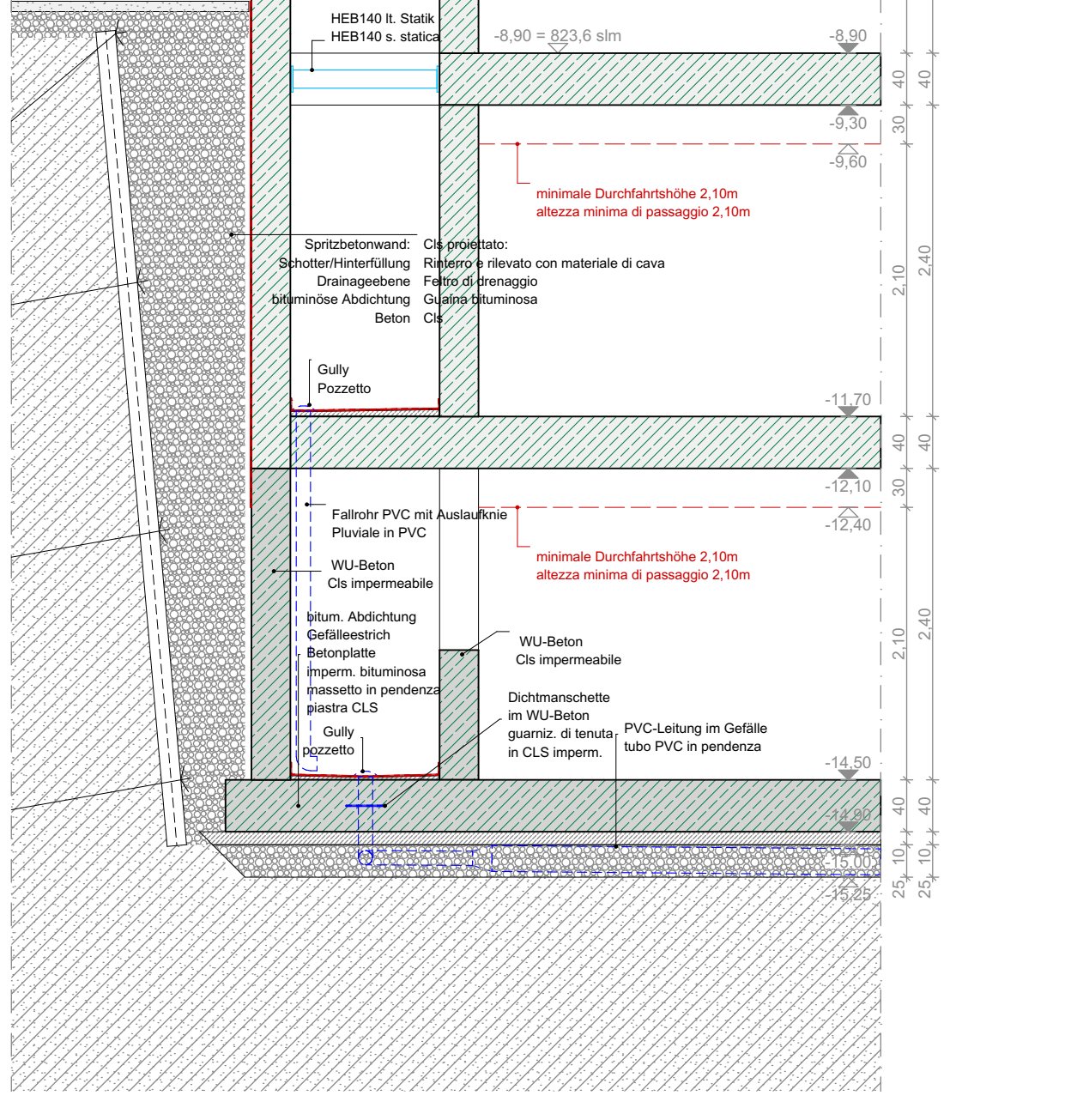
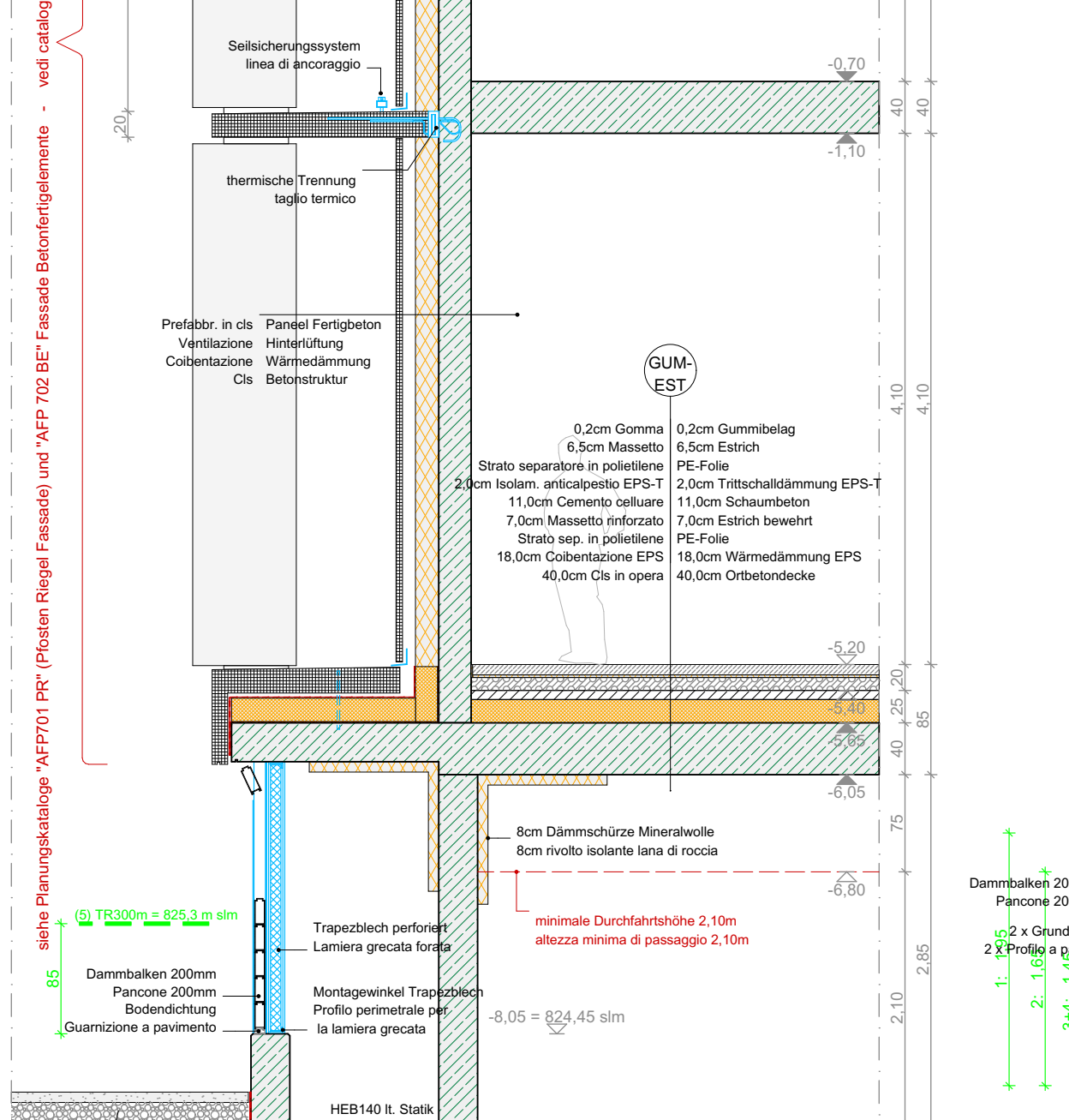
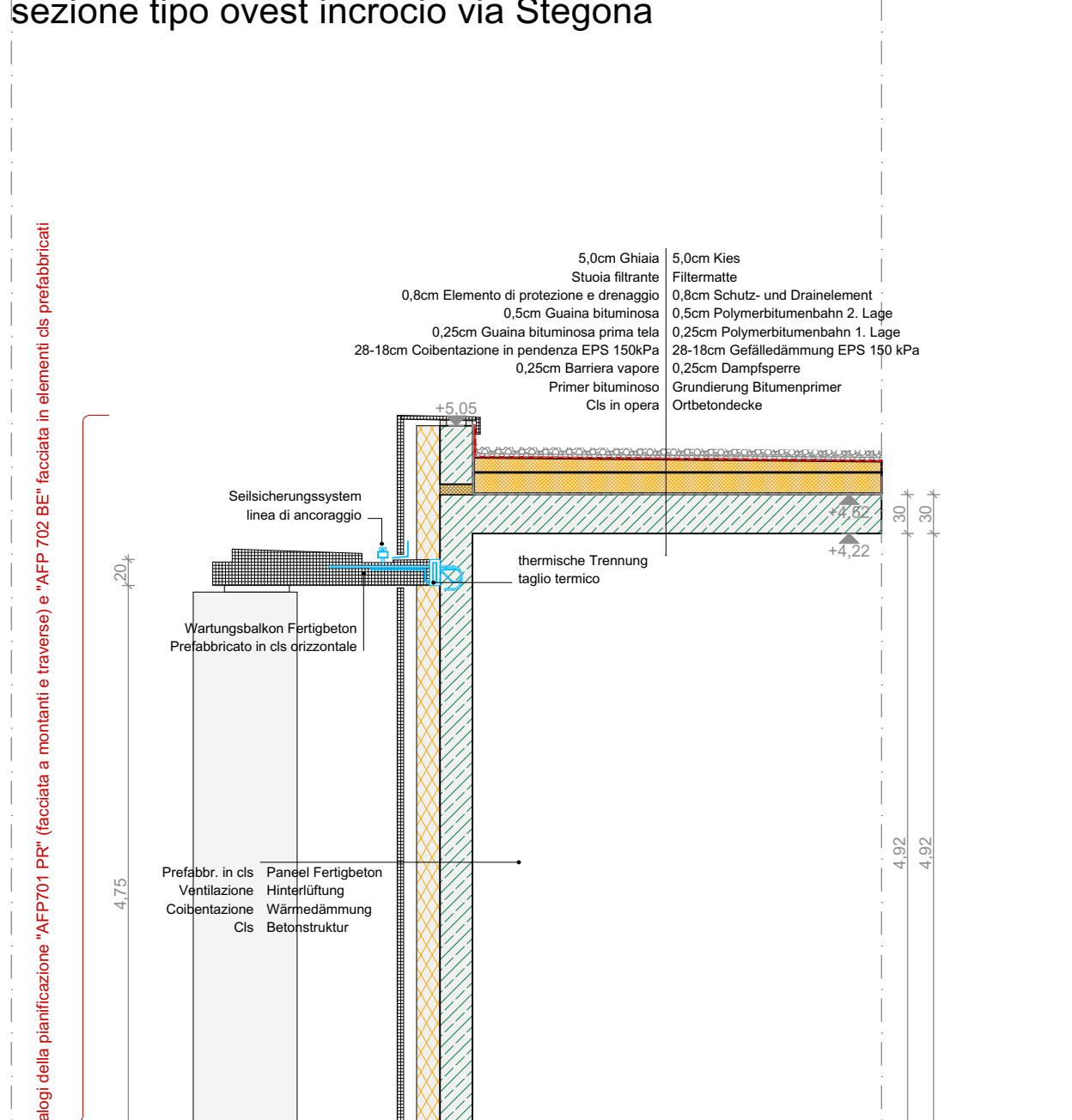
Systemschnitt Zubau Süd-West Ausstellung  
sezione tipo edificio basso sud-ovest esposizione



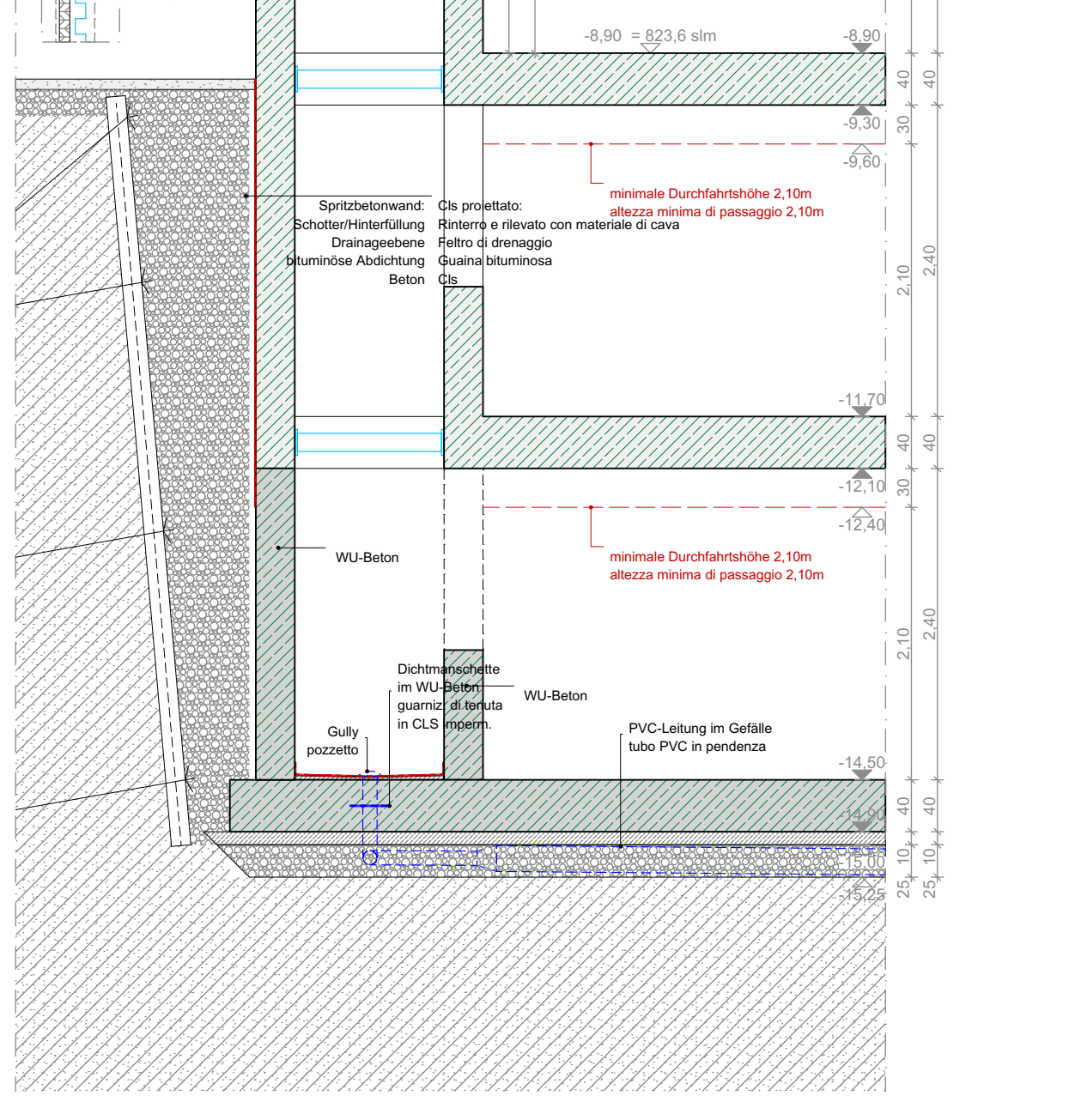
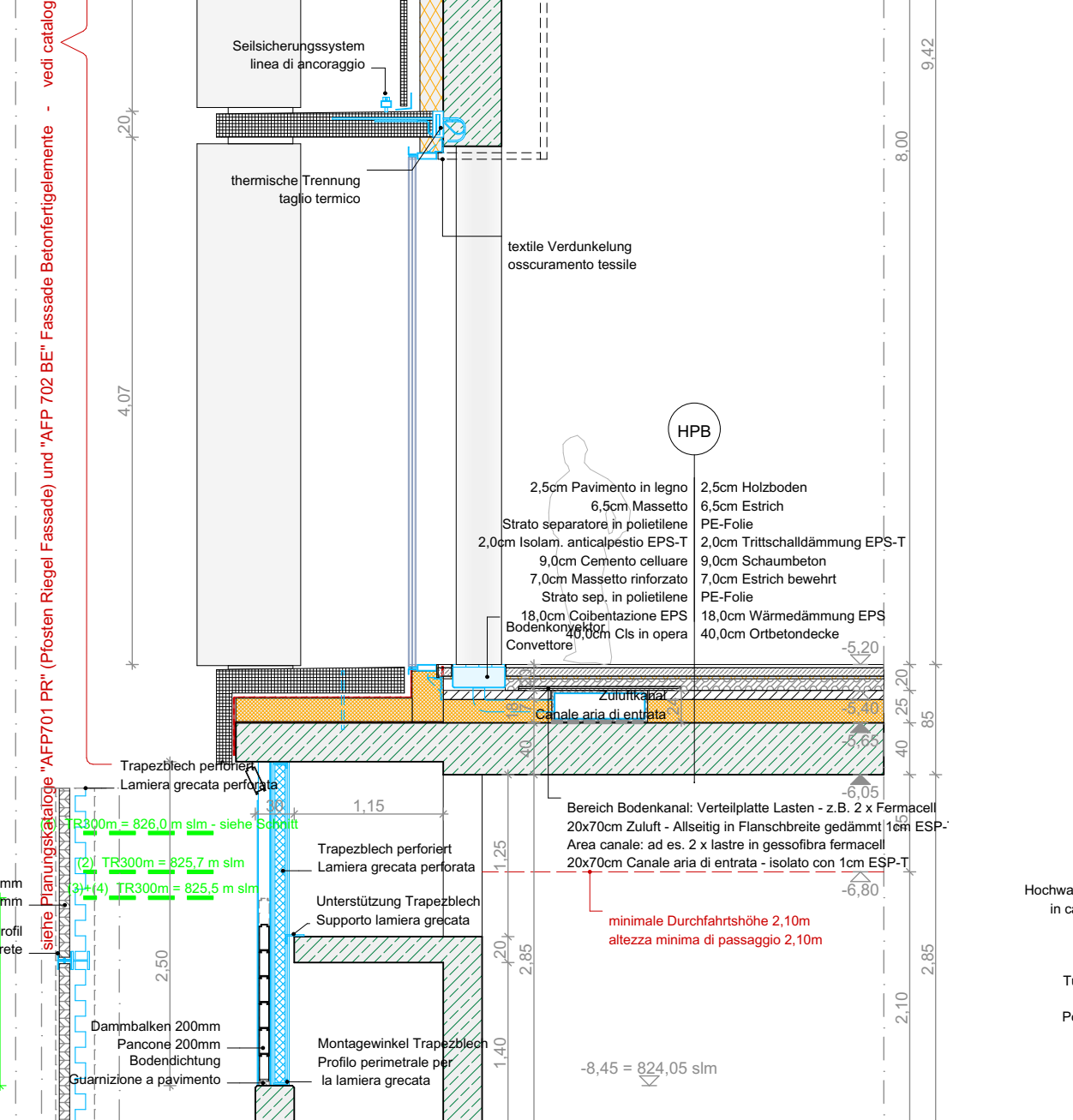
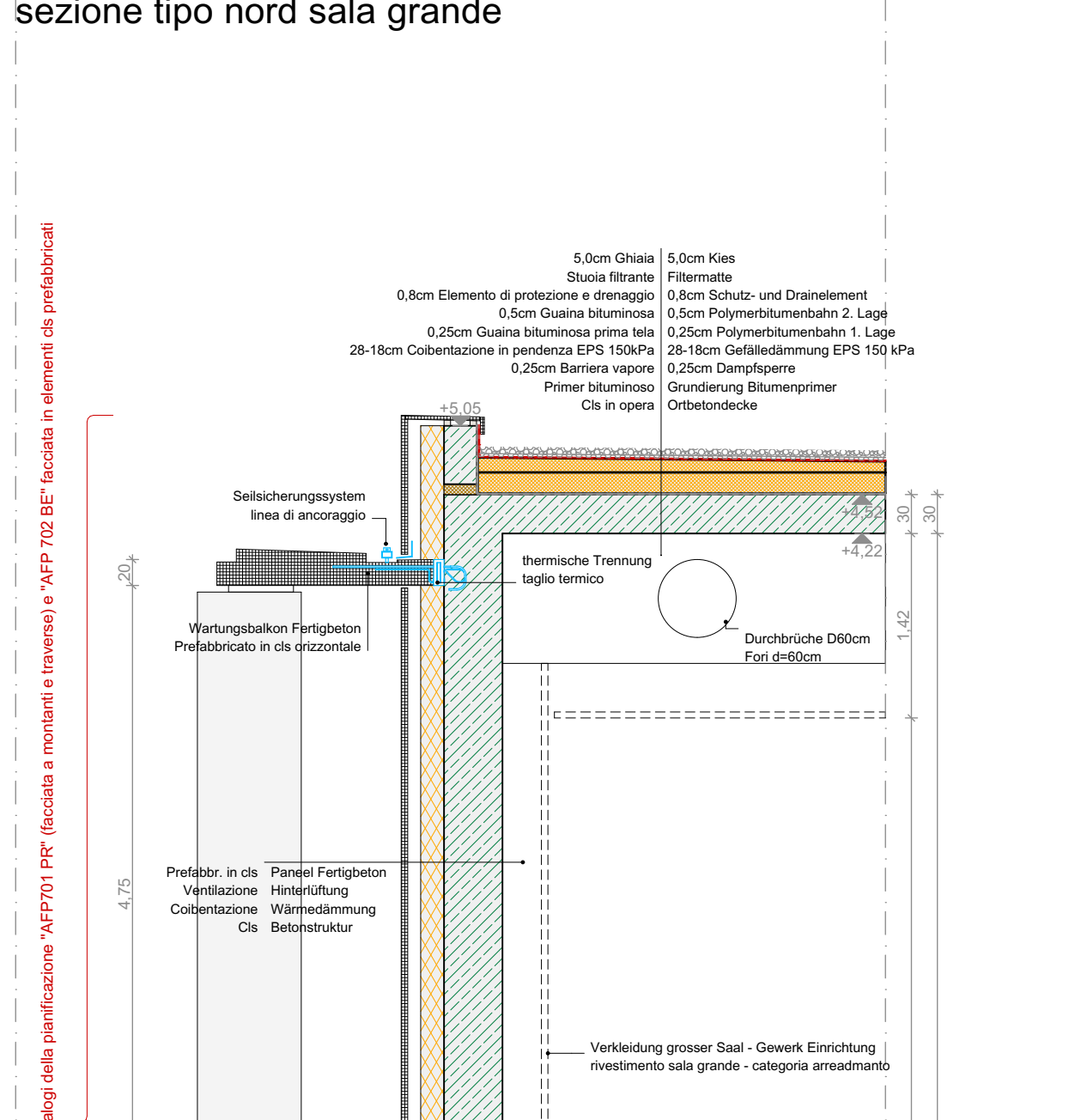
Systemschnitt Süd durch großen Saal  
sezione tipo sud sala grande



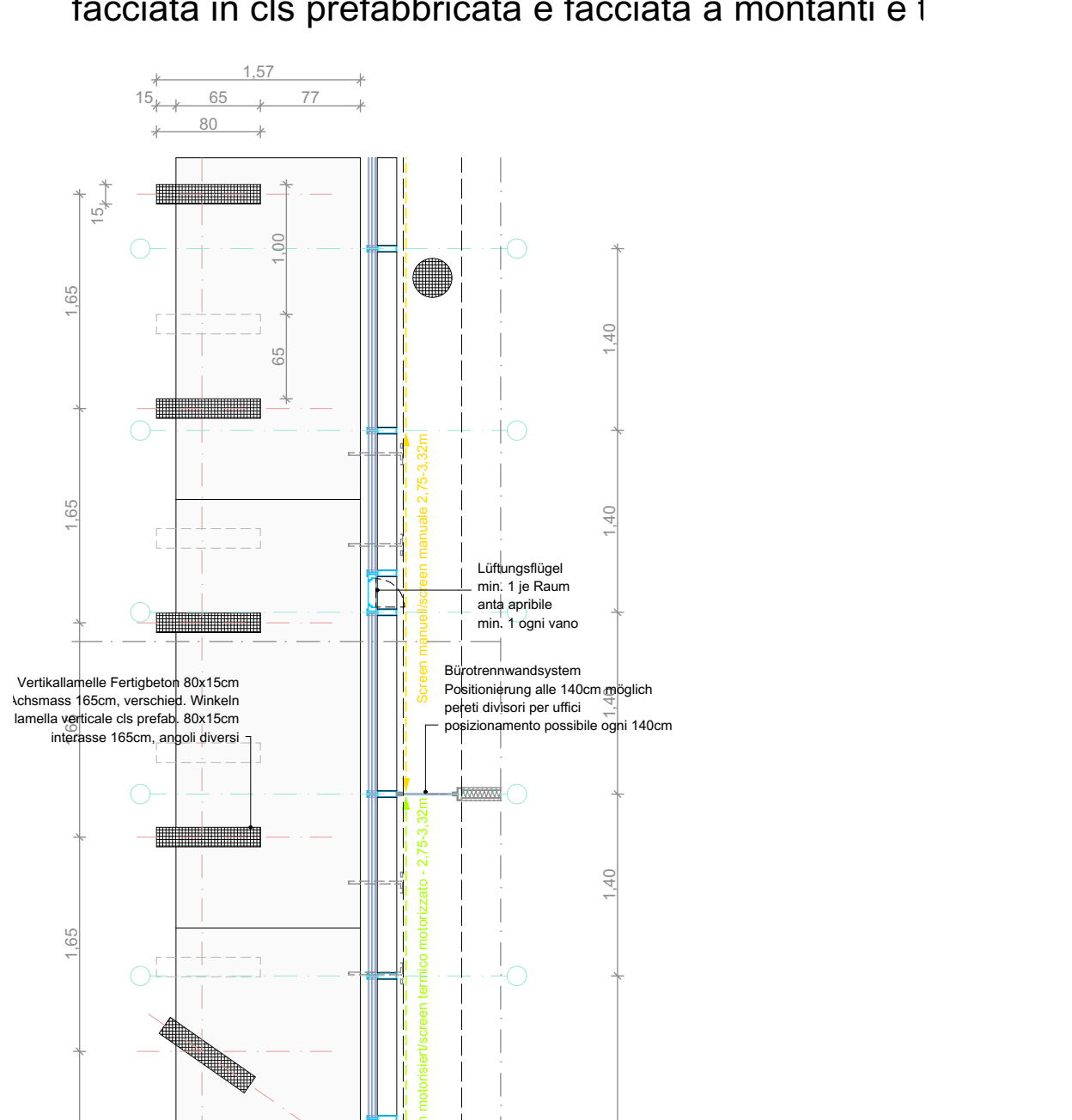
Systemschnitt West Kreuzung Stegene  
sezione tipo ovest incrocio via Stegona



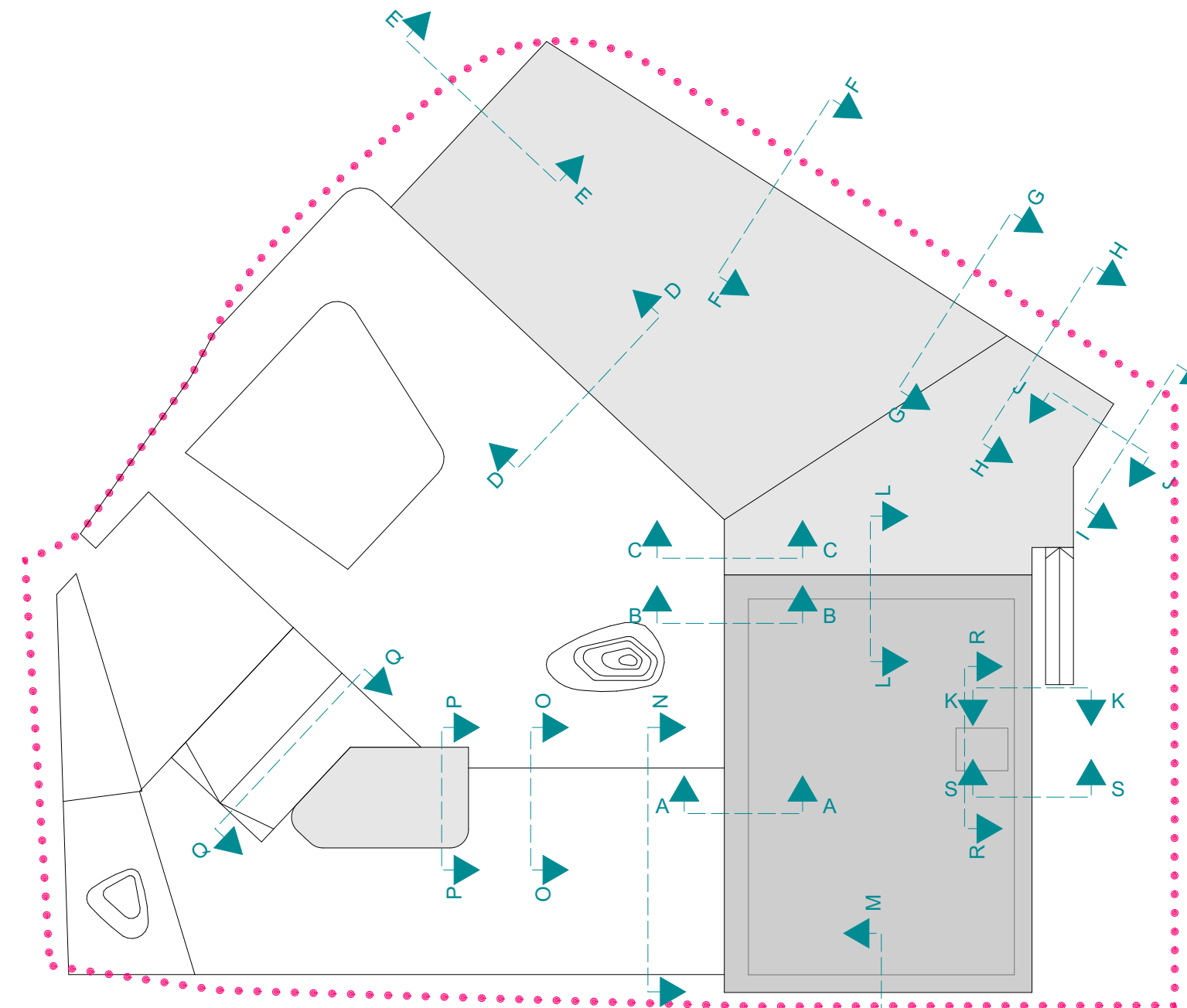
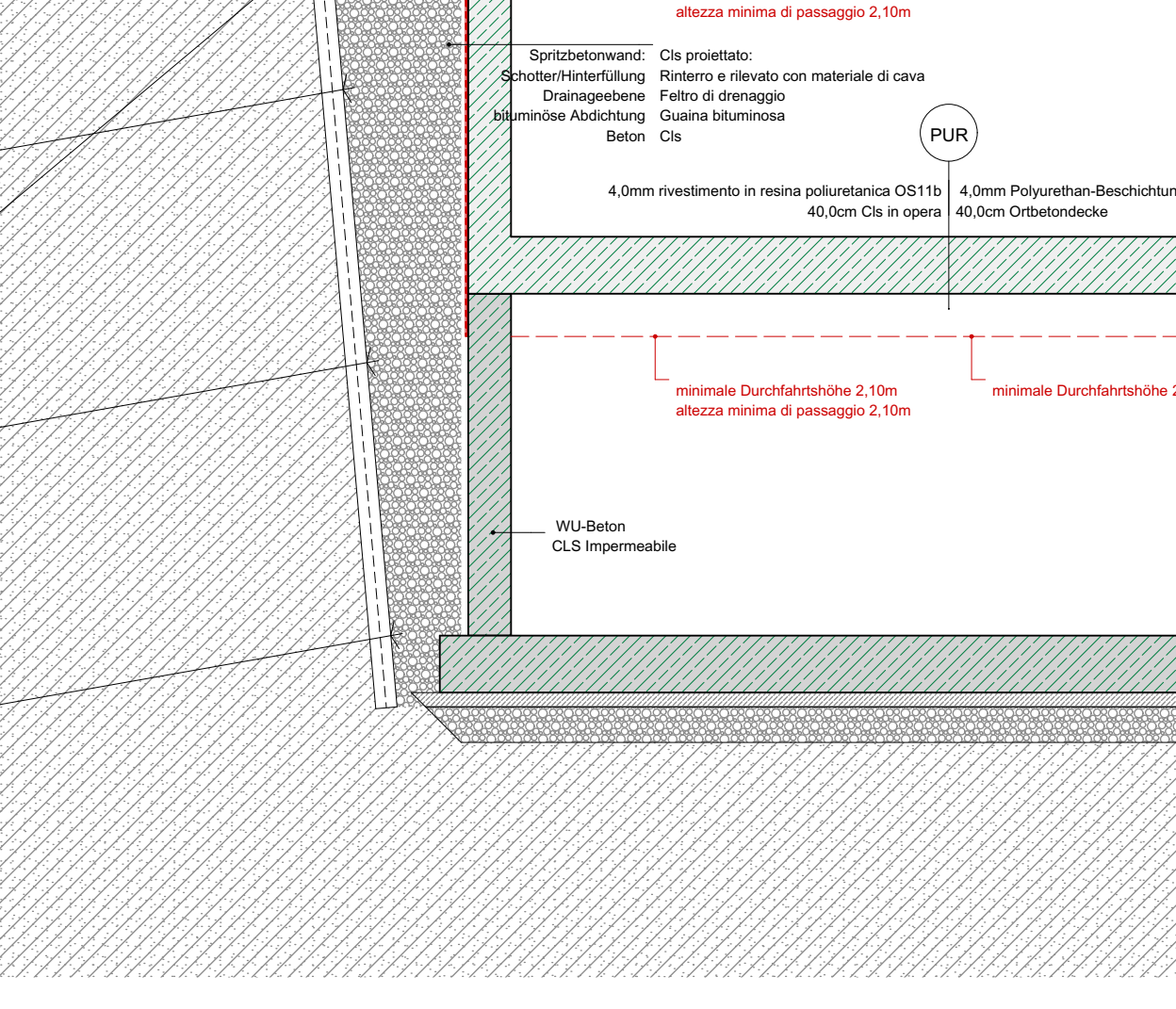
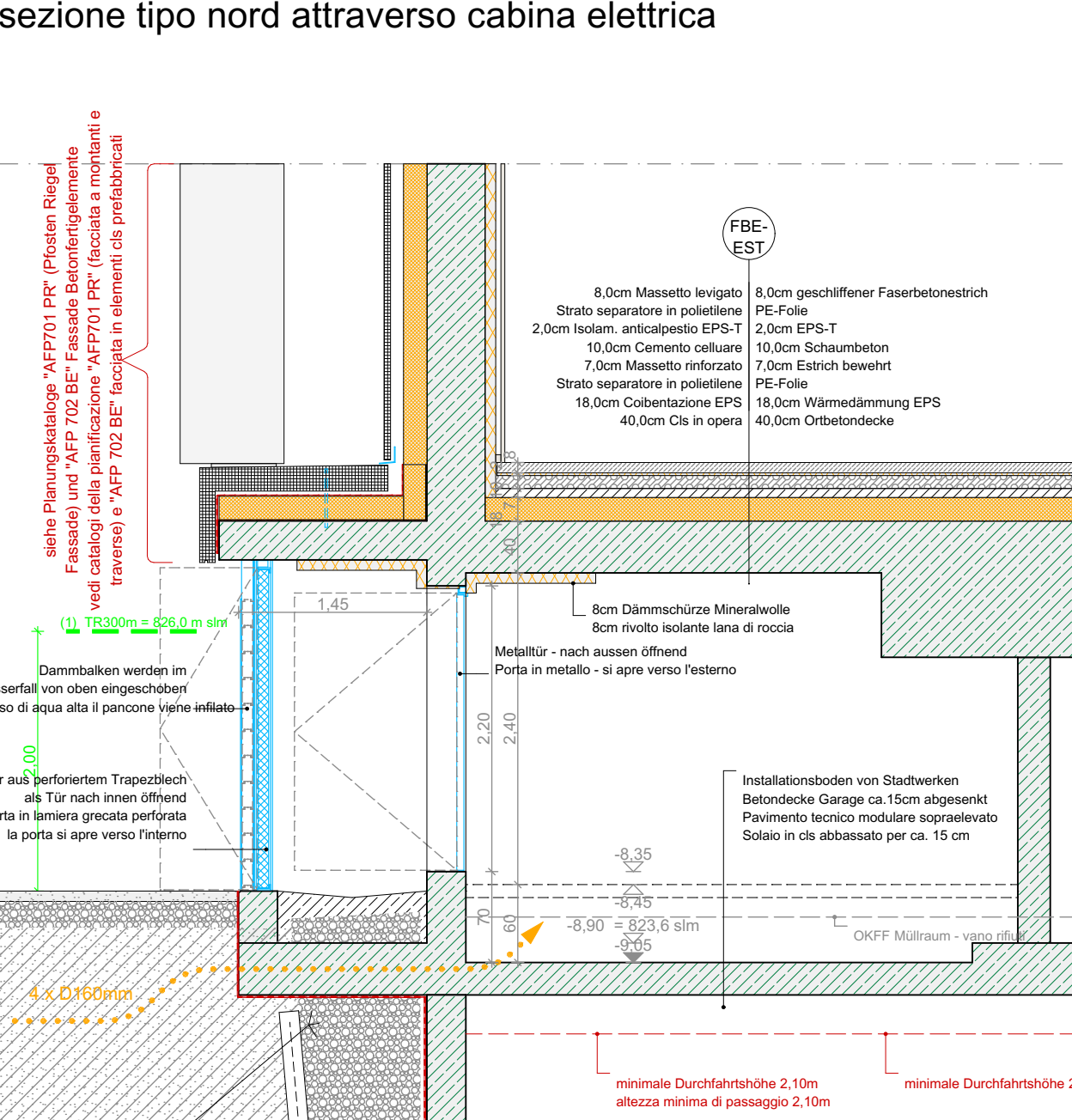
Systemschnitt Nord durch Saal  
sezione tipo nord sala grande



Fertigbetonfassade & Pfostenriegelfassade  
facciata in cls prefabbricata e facciata a montanti e l




Systemschnitt Nord durch E-Kabine  
sezione tipo nord attraverso cabina elettrica

[illegible][illegible][illegible]

ABBREVIURZEN	ABBREVIATIONI
BA = Bodenplatte	BA = traccia pavimento
BD = Bodendurchbruch	BD = foro pavimento
BE = Bodenbelauf	BE = scalo a pavimento
BEH = Brühlungsplatte ab OKRF	BEH = altezza parapetto da quota solido
BC = Balken	BC = canale pavimento
DA = Deckenstufze	DA = traccia solido
DD = Deckendurchbruch	DD = foro solido
LH = Lichte Höhe	LH = altezza netta
OKRF = Oberkante Ritzflüßboden	OKRF = quota pavimento grezzo
OKRF = Oberkante Fertigflüßboden	OKRF = quota pavimento finito
RS = Ritzkanal	RS = condotto
RG = Rohbau-Raumhöhe	RG = altezza grezza
RL = Ritzkantenkanal	RL = cassetto
Tr = Treppen	Tr = trave su piedistallo

UQUG2 = Universitäre Umgebung UQUG3 = Universitäre Fachbereiche UQUG4 = Universitäre Hochschule V = Vorlesung W = Werkstatt W = Werkstatt	UQUG2 = quanta inferno vero si affidano UQUG3 = quanta inferno vero si affidano UQUG4 = quanta inferno vero si affidano V = quanta W = quanta
IND = Industrie IND = Industrie	IND = Industrie IND = Industrie

K U P →  
A R C H

Autonome Provinz Bozen/Provincia autonoma di Bolzano	
<h2>Ausführungsprojekt/progetto esecutivo</h2>	
Bauvorhaben/progetto <b>Errichtung des NOI Techpark Südtirol          Standort Bruneck - Bauros 1</b>	
Costruzione del NOI Techpark Alto Adige sede di Brunico - Lotto 1	
	

Pianinhalt/contenuto	Maßstab/scale
<b>Systemschnitte 1 - sezioni tipo 1</b>	
Systemschnitt / sezione tipo A-A, B-B, C-C, D-D, E-E, F-F, G-G	1:50
Grundrisssschema Fassade / Pianta tipo facciata	1:50
	1:50

Bauherr/committente NOI AG / Spa Voltastraße/Via Volta 13/A 39100 Bozen/Bolzano Tel. +39 0471 410111	
--	--

contracts@pec.noi.bz.it / info@noi.bz.it / 0471 906600	
Projektnummer/numero di progetto <b>1805</b> <small>200514_MPF_N02</small>	Blatt/foglio <b>AFP.250</b>
Index/indice	Datum/data Juli 2019/luglio 2019
4	

2	
1	11.10.2019 Abgabe Ausführungsprojekt / consegna progetto esecutivo
Index	Status
indice	data
	Arbeitsang modifica

Projektant/progettista

KUP-ARCH  
Arch. Karl Kerschbaumer  
Arch. Harald Pichler